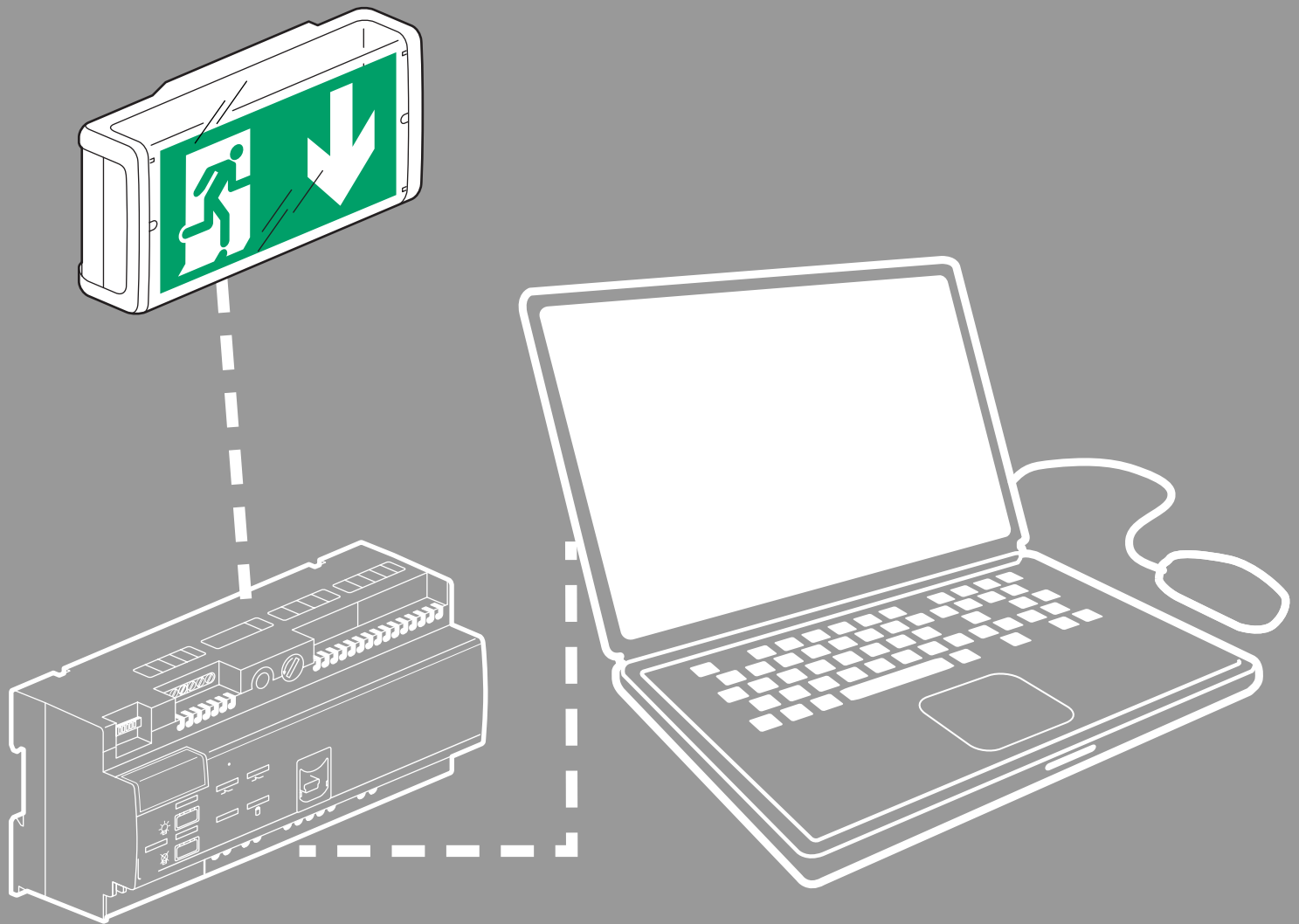


LVS2 supervision software for addressable emergency lighting units



USER GUIDE

 www.legrandoc.com

 **legrand**[®]

Sommaire

PRESENTATION

Types of installation.....	3
Access levels	3

INSTALLATION

Single-station installation.....	4
Multi-station installation	5

INSTALLATION CONFIGURATION

Opening the site configuration software.....	7
Registering the software.....	7
Importing interface configurations.....	8
Linking units with locations	10
Managing interfaces.....	13
Saving the supervisor configuration	14

INSTALLATION SUPERVISION

Opening the supervision software.....	15
Supervising a site.....	16
Managing alarms	17
Managing automatic tests	18
Managing automatic reports	18
Generating worksheets.....	19
History	19

Presentation of the supervision software

The software has three components:

- **LVS2 server:** this component enables communication with the unit(s).
The server is installed on a single workstation and must be registered.
- **Emergency lighting unit configuration:** enables units and interfaces to be configured for supervision.
Can be installed on the same station as the LVS2 server and/or several stations on the network.
- **LVS2 supervisor:** enables supervision of the installation according to access levels.
Can be installed on the same station as the LVS2 server and/or several stations on the network.

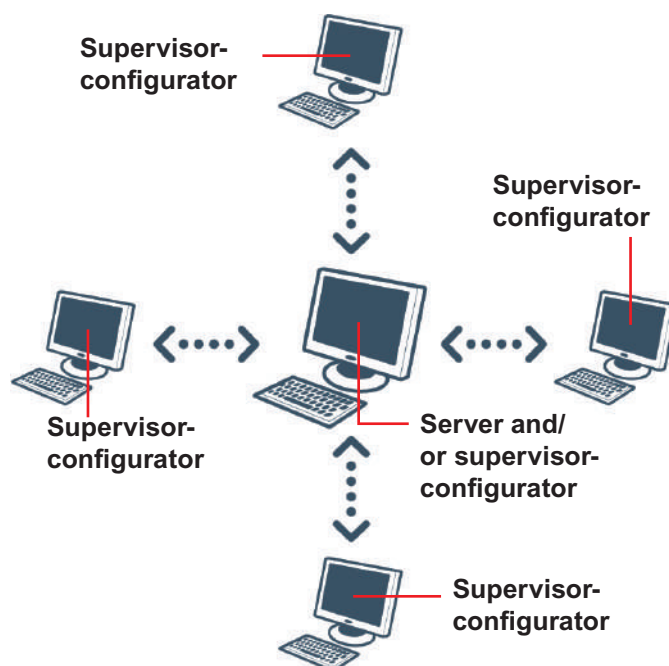
There are two types of installation:

Installation 1: Single-station installation

The server and client are installed on one computer (most common usage)



Installation 2: Multi-station installation



Access levels

You will need to set up different access levels for the two parts of the software. Specific actions will then be possible according to your access level.

Emergency lighting unit configuration

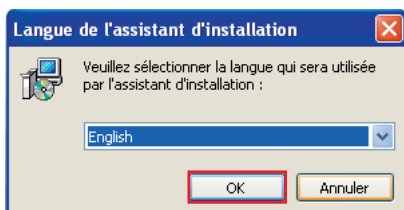
- Level 0:** No access with level 0
- Level 1:** No access with level 0
- Level 2:** Define site, user and unit settings
Register the software
Define alarm settings...

Emergency lighting unit supervision

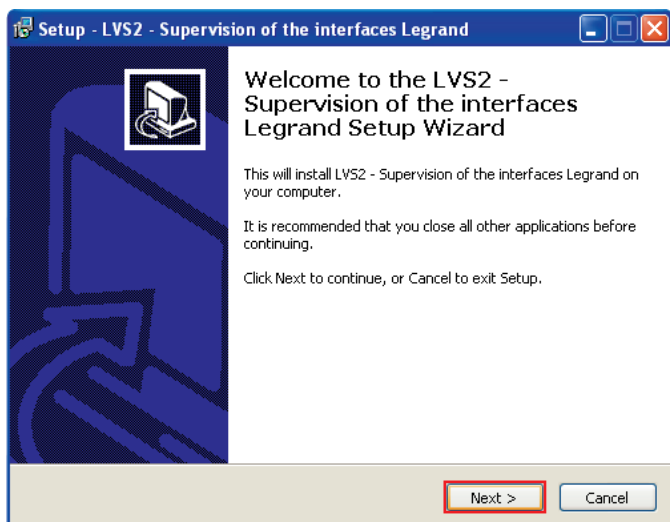
- Level 0:** View statistics for all sites
- Level 1:** Level 0 functions
View unit statuses
Clear alarms
Test units
- Level 2:** Define system settings

Installation

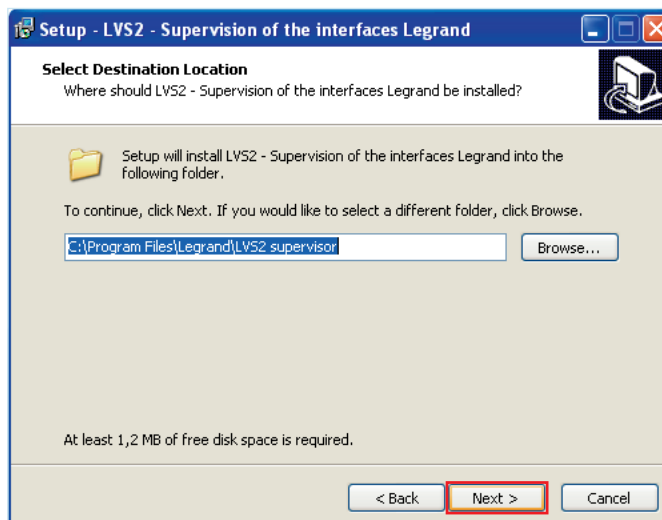
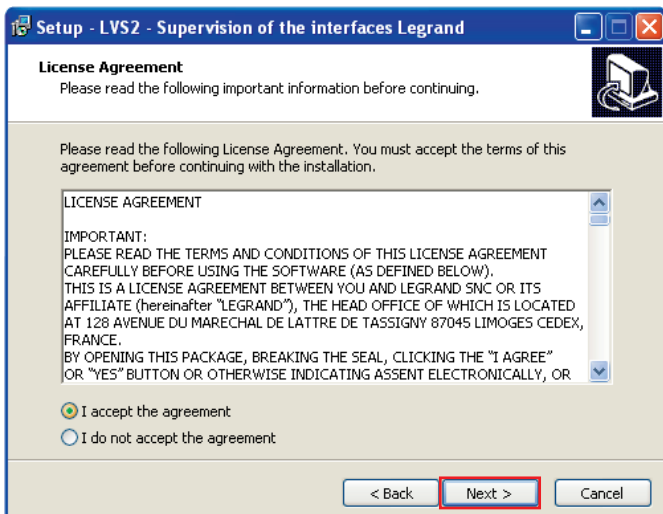
Supervision software Cat. No. 0 626 02 is available on a USB stick.
 Insert the USB stick into the appropriate port on your PC.
 The stick's directory will appear on your screen.



1 Double click on **logiciel_LVS2_Supervisor_vx.x.exe** to start the installation.



2 Click on **Next** to run the installation.



The default installation directory is shown.

To change this directory, click on **Browse** and select the access path for the desired directory.

3 Click on **Next** to accept.

> LVS2 server:

This component enables communication with the unit(s). Installed on a single station. This component must be registered.

> Emergency lighting unit configuration:

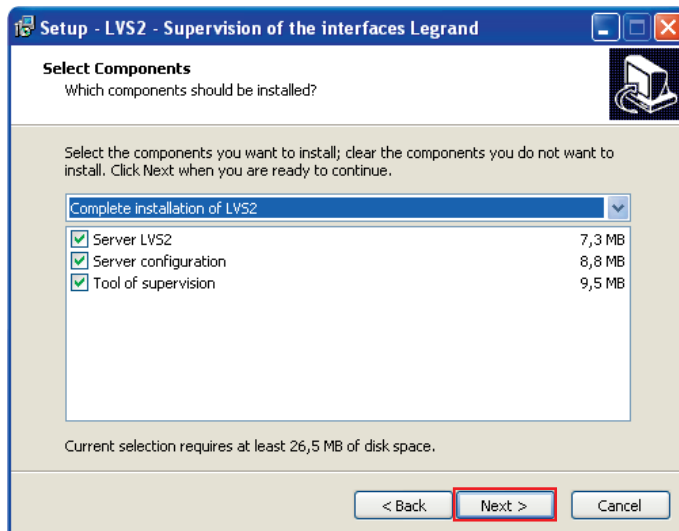
Enables units and sites to be configured for supervision. Can be installed on the same station as the server and/or several stations on the network.

> LVS2 supervisor:

Enables supervision of the units according to access levels. Can be installed on the same station as the server and/or several stations on the network.

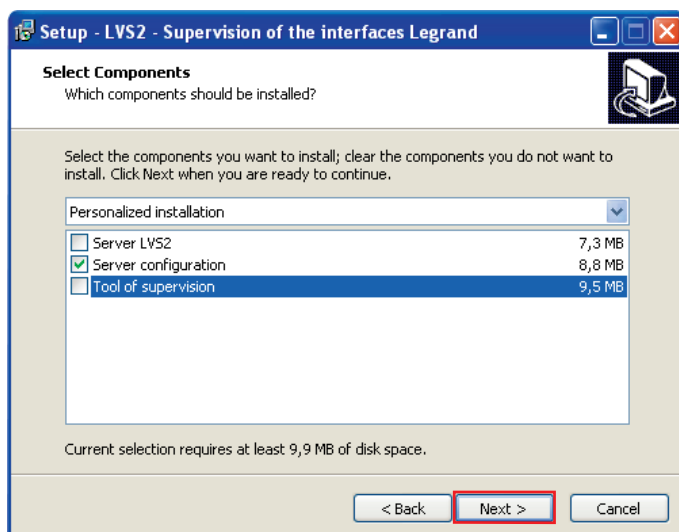
Case 1 - Single-station installation - (LVS2 server, emergency lighting unit configurator and LVS2 supervisor on a single station)

The most usual installation is the default setting.



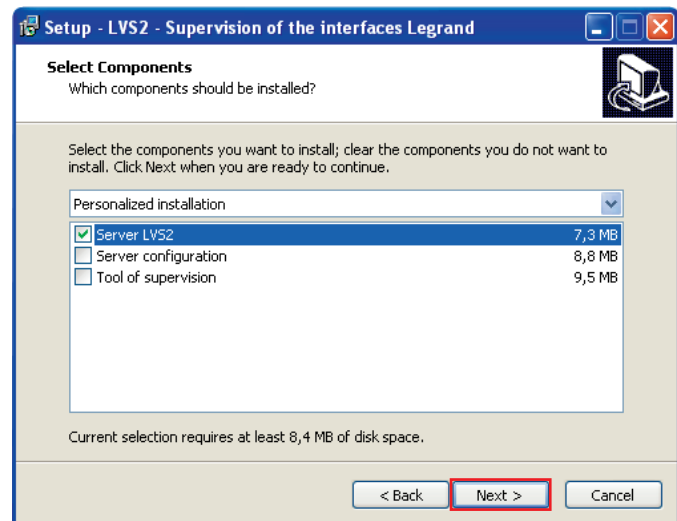
4 Click on **Next** to accept.

Case 2 - Multi-station installation - (emergency lighting unit configurator and/or LVS2 supervisor).

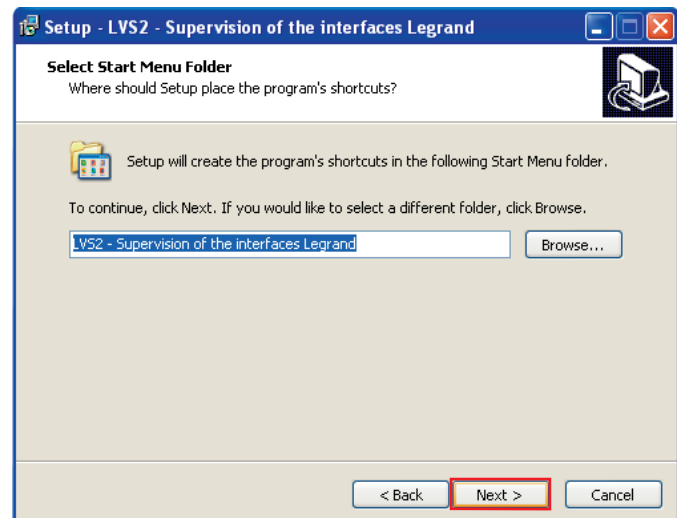


4 Click on **Next** to accept.

Case 3 - Multi-station installation - (LVS2 server only).



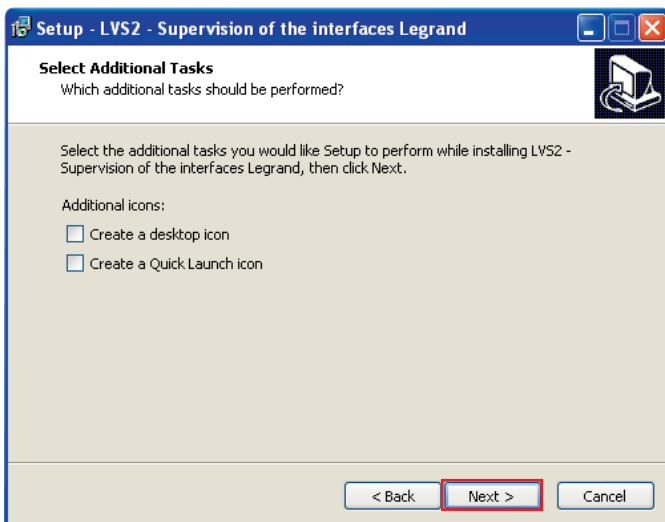
4 Click on **Next** to accept.



The start menu shortcut appears by default. To change this directory, click on **Browse** and select the access path for the desired folder.

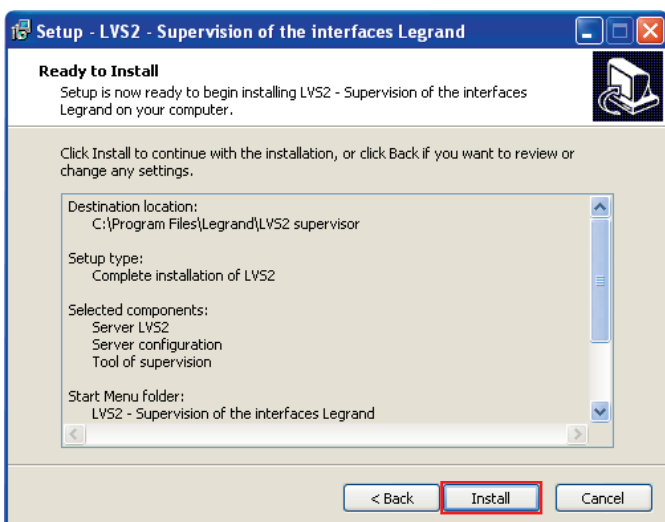
5 Click on **Next** to continue the installation.

Installation (cont.)



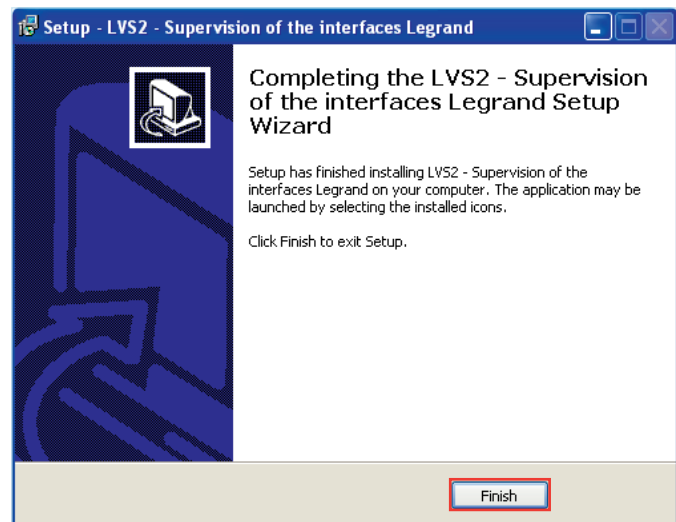
6 Select the checkboxes if you want to create icons on your PC.

7 Click on **Next** to continue the installation.



Check the summary of information entered so far.

8 Click on **Install** to run the installation.



Two icons appear on your desktop.



LVS2 - Emergency lighting units configuration

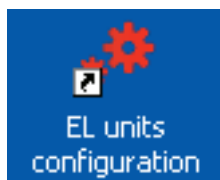


LVS2 - Emergency lighting unit supervision

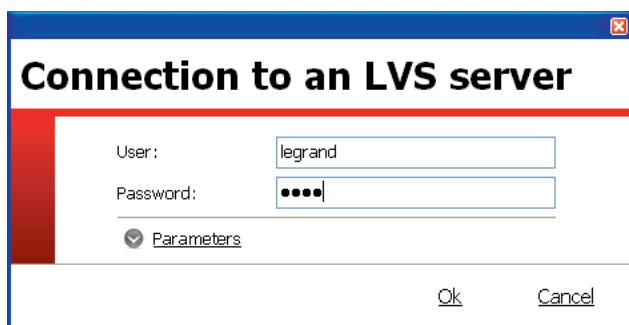
Installation configuration

1 - Opening the site configuration software

1 Double click on **LVS2 - emergency lighting unit configuration** to start configuration.



The software opens and you will need to log in to access server configuration functions.



2 Enter the default password: **1234**

You may then begin configuring the server with your installation data.



The next time you log in, you will need to enter the password saved previously in the configuration software supplied with the interface.

2 - Registering the software

Please note that to operate beyond a duration of 60 days, this software must be registered with Legrand



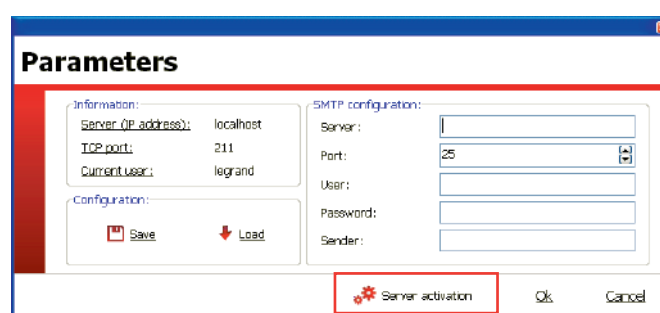
Registration must be done on the computer on which the server is installed.

1 Click on the **Parameters** icon.



A new screen is displayed.

Parameters



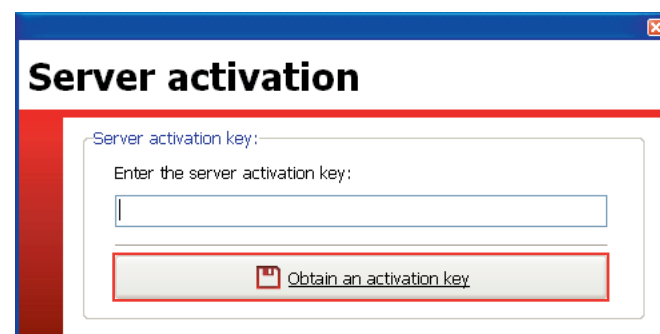
2 Enter the information.



SMTP parameters should be entered if you would like to send your software registration request by email.

3 Click on **Server activation**.

A new screen is displayed.



4 Click on **Obtain an activation key**.

A registration request form appears.

5 Fill in the mandatory fields.

6 Click on **Send by email** or **Save**.



Send by email: enables you to send the form via your email client.

Save: enables you to save a PDF copy of the form to send it at a later time as an attachment, for example.

You will receive the software registration key within 7 business days

Installation configuration (cont.)

3 - Importing interface configurations

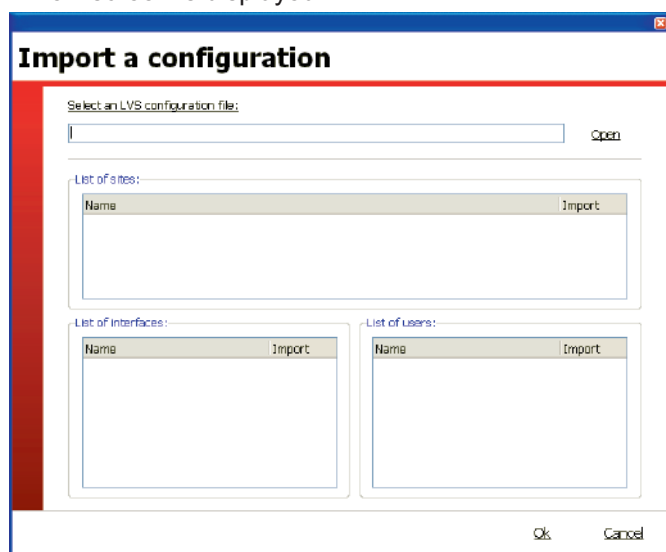
In order to supervise units in your installation, you need to know which units are linked with the supervised interfaces.

A list of units is produced in a .lvc file by the interface configuration software.

1 Click on the **Import** icon.

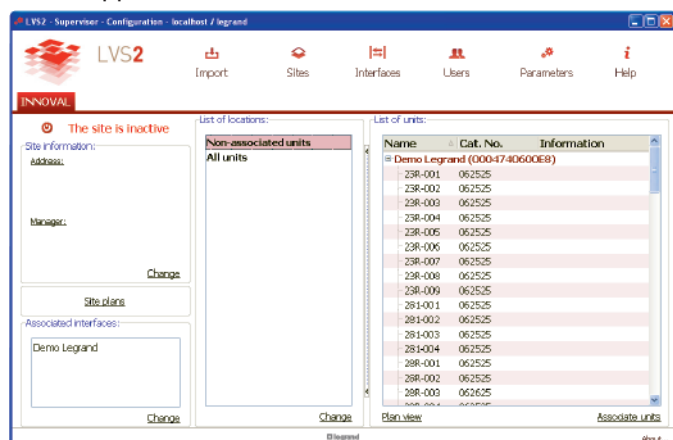


A new screen is displayed.




2 Click on **Open** and select the .lvc file to import.

The name of the site, the list of interfaces and the list of Users appears.


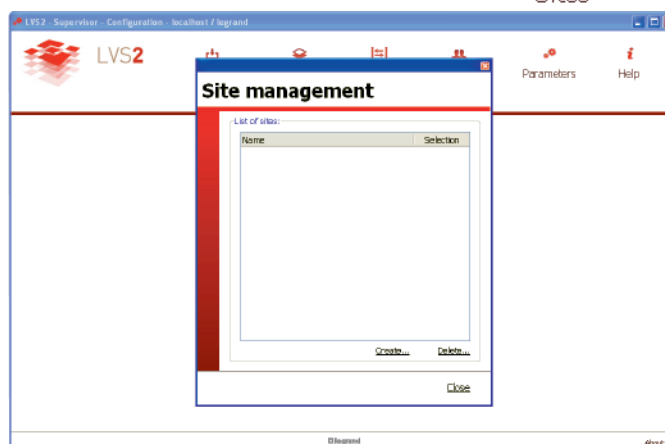


3 Click on **OK**.

- If a site was correctly created when configuring the interface (in the interface configuration software), you can move on to step 4 – "Linking units with locations".

 If no site was created when configuring the interface, the software screen will remain the same after importing the .lvc file. You will then need to create one and link it with the interface indicated when importing the .lvc file.

To create a site, click on the **Sites** icon and then **Create**.

Fill in all the fields requested when creating the site. Then link the interface indicated when importing the .lvc file with this site. To do this, follow the instructions on page 9.

The site is displayed with the information entered on the interface.

Once a configuration has been imported, you can enter more detailed information for the site concerned.

The site is inactive

Site information:

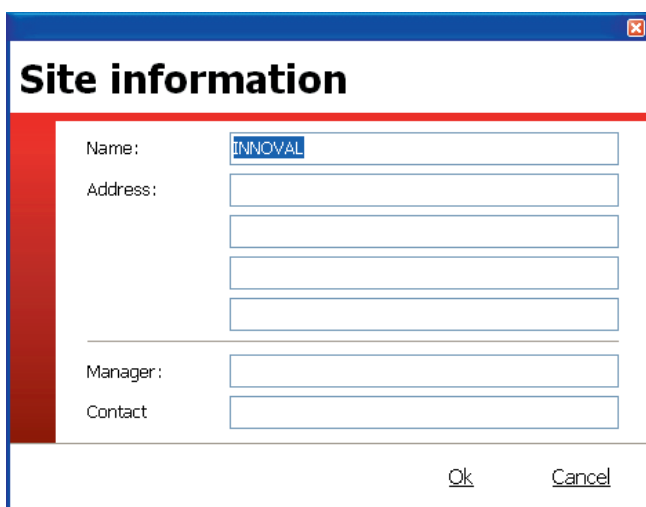
Address:
128 Avenue De Lattre De Tassigny

Manager:
M. LEGRAND
05 55 06 87 XX

[Change](#)

4 Click **Modify**.

A window is displayed.



5 Fill in the empty fields.

6 Click on **OK**.

The site is displayed with the information entered.

Once the site is specified, you can change the interfaces necessary to associate the site

 **The site is inactive**

Site information:

Address:

128 Avenue De Lattre De Tassigny

Manager:

M. LEGRAND

05 55 06 87 XX

[Change](#)

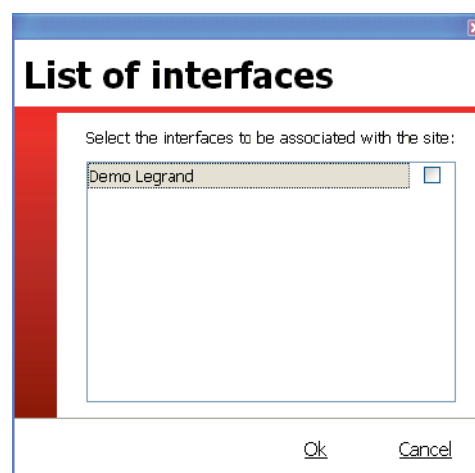
[Site plans](#)

Associated interfaces:

Demo Legrand

[Change](#)

7 Click on **Change** in the "Associated interfaces" section.



8 Tick the boxes for the interfaces to be linked with the site.

9 Click on **OK**.

Installation configuration (cont.)

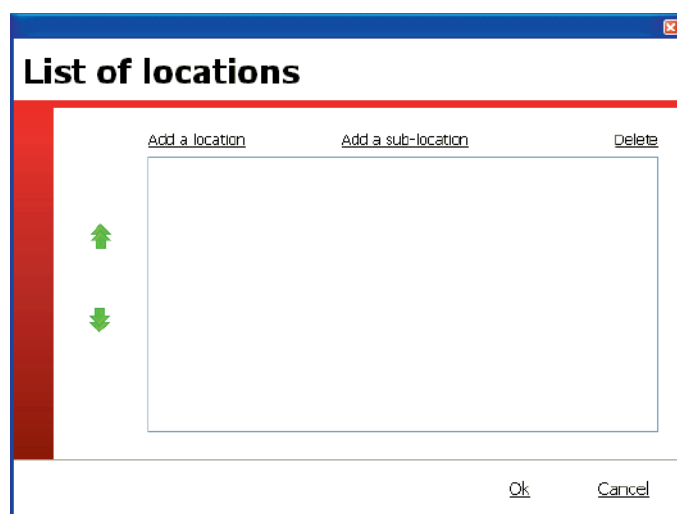
4 - Linking units with locations and on the plans

This step must be completed. It enables addressed units to be allocated to customised locations and sublocations.

I - Creating locations

In the location list section:

- 1 Click on **Modify**.



- 2 Click on **Add a location** (level 1).
- 3 Select the line and enter your level 1 in the site.
- 4 Repeat the process as many times as necessary, using the same method for the sub-locations.



You can enter up to 3 different levels.

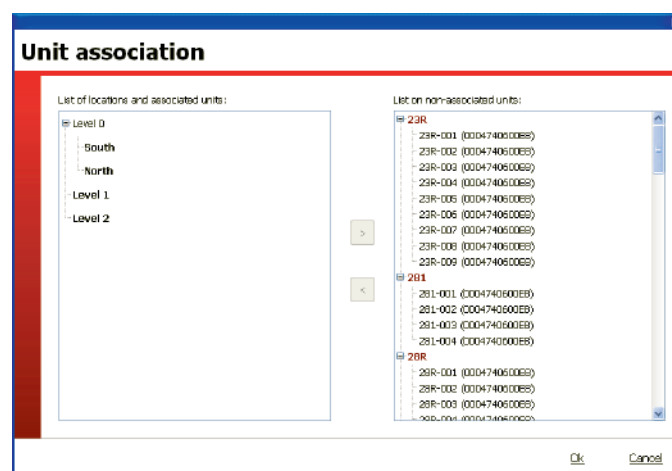
Once the various site locations have been entered, you need to link the units with each location.

II - Linking units with locations

In the Unit List section:

- 1 Click on **Unit association**.

A new window appears with the list of locations and units.



- 2 Select the units to be positioned (you can select more than one unit using the SHIFT button on your PC; selected units are underlined in red).
- 3 Select the relevant location (it appears underlined in red).
- 4 Click on **<**.

The units are positioned in the selected location. Repeat the process to link all units.

- 5 Click on **OK**.



You can also drag and drop units into locations.

III - Placing units on plans

Plans in the following formats can be imported in the LVS2 supervision software: dwg, dxf, gif, jpeg.

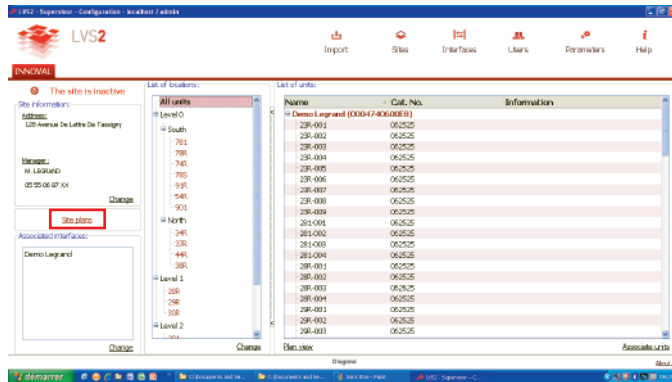


The time needed to load the plans depends on the size of the file.

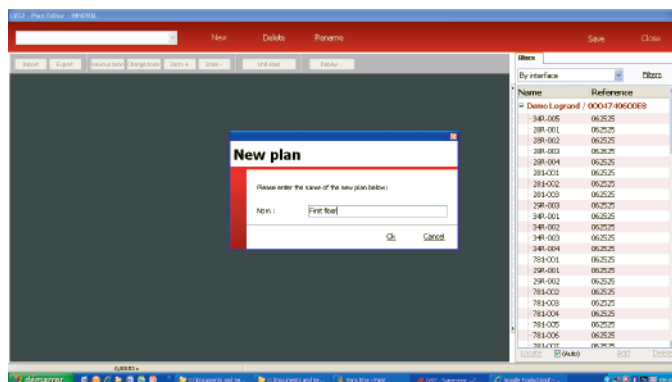
Units previously placed in locations/sub-locations can then be placed on these plans.

The placed units can then be actively supervised using the supervision software.

Open the plan editor by clicking on the **site plans**:

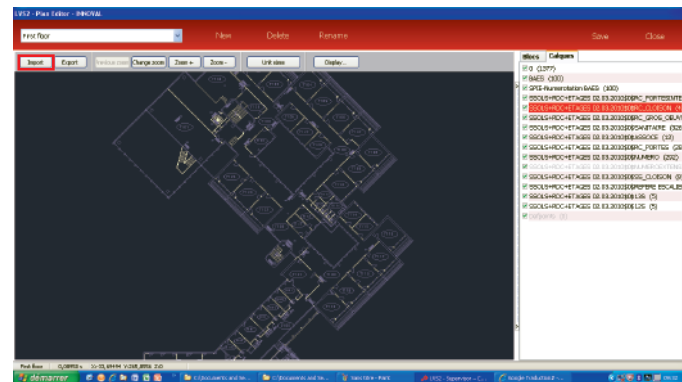


Click on the New button then name (with 35 characters max.) the first plan to be imported in the software. E.g.: Building B first floor.

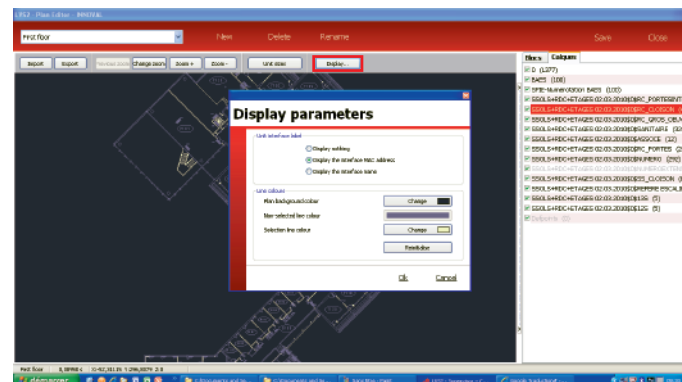


Import the corresponding plan using the import button (top left).

The imported plan is displayed in the dark box on the left of the window. In the templates tab, you can modify the display of dxf and dwg plans. To do this you can either select a line on the plan (the template concerned will then be displayed in red), or select a template in the list (the lines concerned will then be displayed in a lighter colour on the plan).

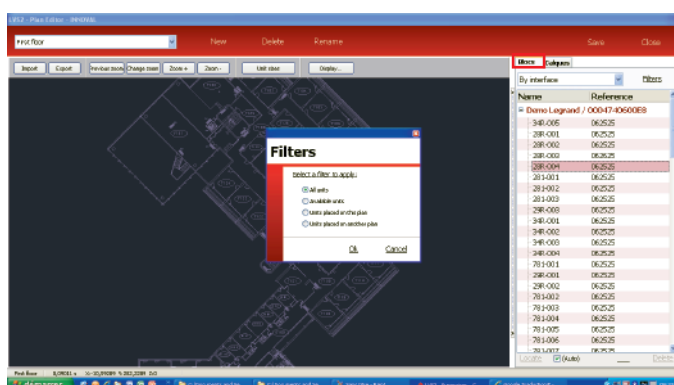


You can zoom in or out on the plan with the zoom + / zoom - buttons, or using the mouse wheel. Right click on the mouse to grab the plan and move it. The plan background colours can be changed with the display button:



Installation configuration (cont.)

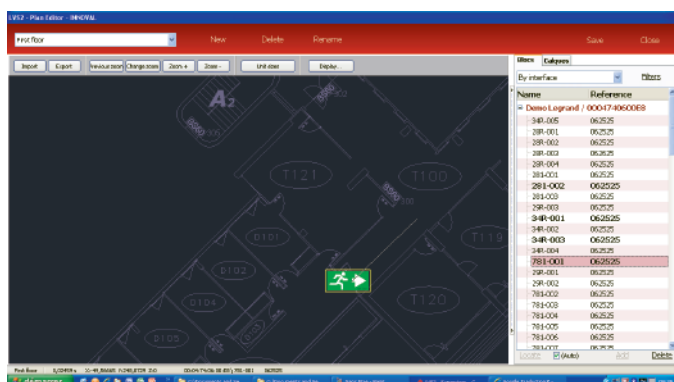
In order to place units, they must have been previously linked with locations. Open the unit tab in the plan editor.



In this tab, you can filter units either by interface or by location. You can also choose to display only units that are available (not yet placed on plans), units placed on the plan or all units. To place a unit on a plan, select the unit in the **Units** tab list, then click on add or double click on it. To reduce or increase its size, first select the unit, then either click on the unit size button and Zoom + or Zoom -, or hold down Alt and use the mouse wheel. To rotate the unit, hold down Ctrl and use the mouse wheel.

Note: the size of all units on a plan is identical. Therefore, when you change the size of one unit, all the other units on the same plan change size accordingly.

To place a unit, select it with the left mouse button and hold it down while dragging the unit to the desired location. The unit is placed when you release the left mouse button.



Units already placed, to be placed and placed on a different plan are displayed differently in the list.

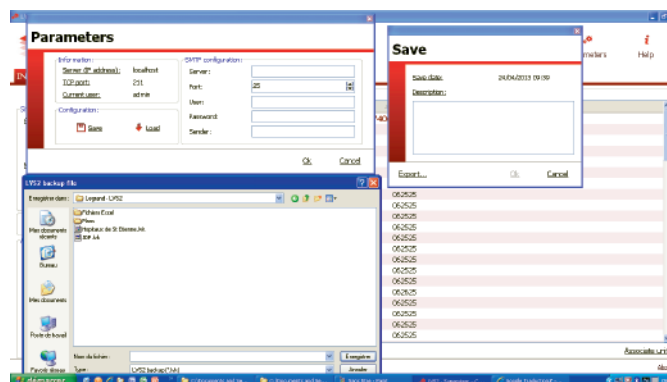
In the example shown below, units displayed in bold have been placed on the active plan, units in regular font have not yet been placed and units in light grey belong to another plan.

Name	Reference
Demo Legrand / 0004740600E8	
34R-005	062525
28R-001	062525
28R-002	062525
28R-003	062525
28R-004	062525
28R-001	062525
28R-002	062525
28R-003	062525
28R-004	062525
281-001	062525
281-002	062525
281-003	062525
28R-002	062525
34R-001	062525
34R-002	062525
34R-003	062525
34R-004	062525
781-001	062525
29R-001	062525
29R-002	062525
781-003	062525
781-004	062525
781-005	062525
781-006	062525
781-007	062525

When all the units are placed on the plan, save the work done by clicking on save. To add a new plan, click on new then import and place units on the plan. You can switch between plans by using the dropdown list in the top right corner of the plan editor. You can rename or delete a plan. To do this, select it in the dropdown list, then click on rename or delete at the top of the plan editor.

Note: Plans (along with linked units) can be exported in dxf format (the units placed on the plan will be on a specific template) or as a PDF, by clicking on the "export" button in the plan editor.

A save folder can be made as follows: save any modifications and close the plan editor. Click on parameters, save, then name the save folder, click on export, choose a destination folder for the save, name the file to be saved and then save. The file is then saved with the extension .lvk.



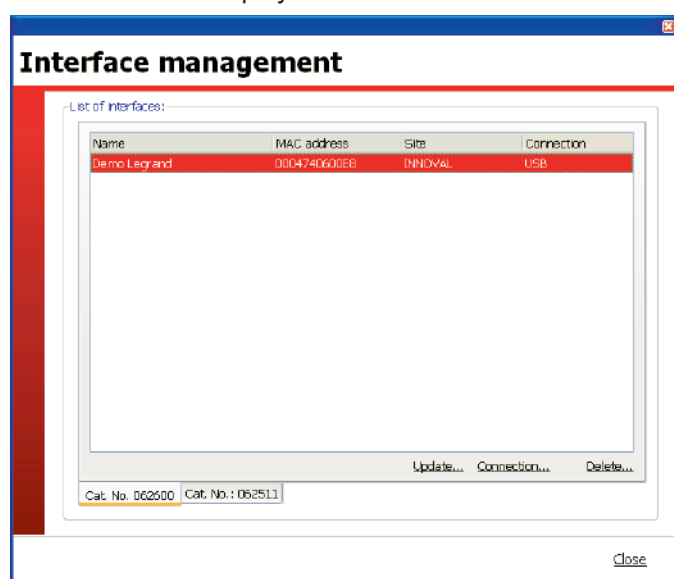
5 - Managing the interfaces

This step will enable you to set the frequency at which the supervisor connects to the interface.

- 1 Click on the **Interfaces** icon.



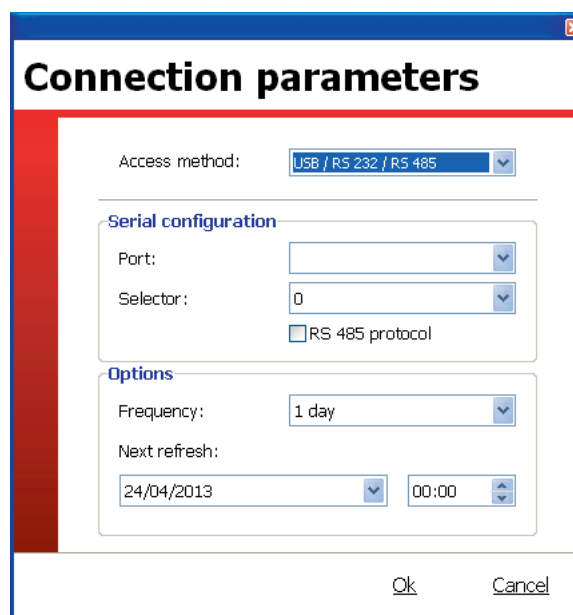
A new screen is displayed.



The interfaces present are those that were imported in the .lvc file (p.8).

To set the parameters for an interface (case of interface Cat. No. 0 626 00):

- 2 Click on tab **Cat. No. 0 626 00**.
- 3 Click on **Connection**.



- 4 Enter or check the interface's configuration parameters.
- 5 Enter the date and time of connection periods of the interface to the supervisor.
- 6 Click on **OK**.



To add or update units on a Cat. No. 0 626 00 interface, you must use the **Update** button and import the .lvc file updated by the interface configuration software with the unit(s) added or modified.

The process is the same for a Cat. No. 0 625 11 interface. You should also click on **Update** to update the units on this interface.

You can also manually add or delete an interface.

- 7 Click on **Finish**.

Installation configuration (cont.)

6 - Saving the supervisor configuration

Once all the parameters have been entered, you must save the configuration.

- 1 Click on the **Parameters** icon.



A new screen is displayed.

- 2 Click on **Save**.

A new screen is displayed.

- 3 Insert a comment in the Description section if needed.
- 4 Click **OK** if wish to save your data locally, or **Export** if you wish to save your data on another medium.

When exporting, the application saves an .lvk file. This file can then be imported in the configuration software using the **Import** button in the load section.

To return to a previous configuration, you simply need to load the saved file.

- 5 Click on **Load**.

A new screen is displayed.

Date	Description:
24/04/2013 09:45	
24/04/2013 09:44	Demo
24/04/2013 09:44	

- 6 Select the configuration to be imported.
- 7 Click on **Load**.

Installation supervision

1 - Opening the supervision software

1 Double click on **LVS2 - Emergency lighting units supervision**.



At least one site needs to be activated to open this software.

The software opens with the information concerning the activated sites

List of supervised sites.
When the site is selected (displayed in red), details of the installation are given on the right-hand side of the screen.

Interfaces	1 / 1
Units	90
Units with errors	0
Failure rate	-
Units disabled	0
Last refresh	None

Date	Alarm

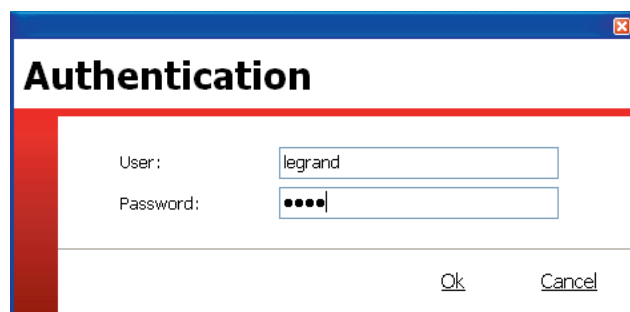
Site-by-site summary of the status of your installation, with the number of faults detected and distribution of statuses.

Installation supervision (cont.)

2 - Supervising a site

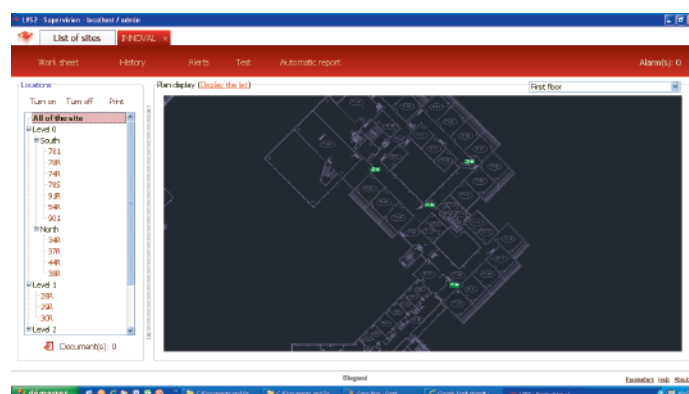
1 Click on **Open** on the tab of the site concerned.

A window opens and to gain access you must log in with your password previously defined in the emergency lighting unit configuration software.

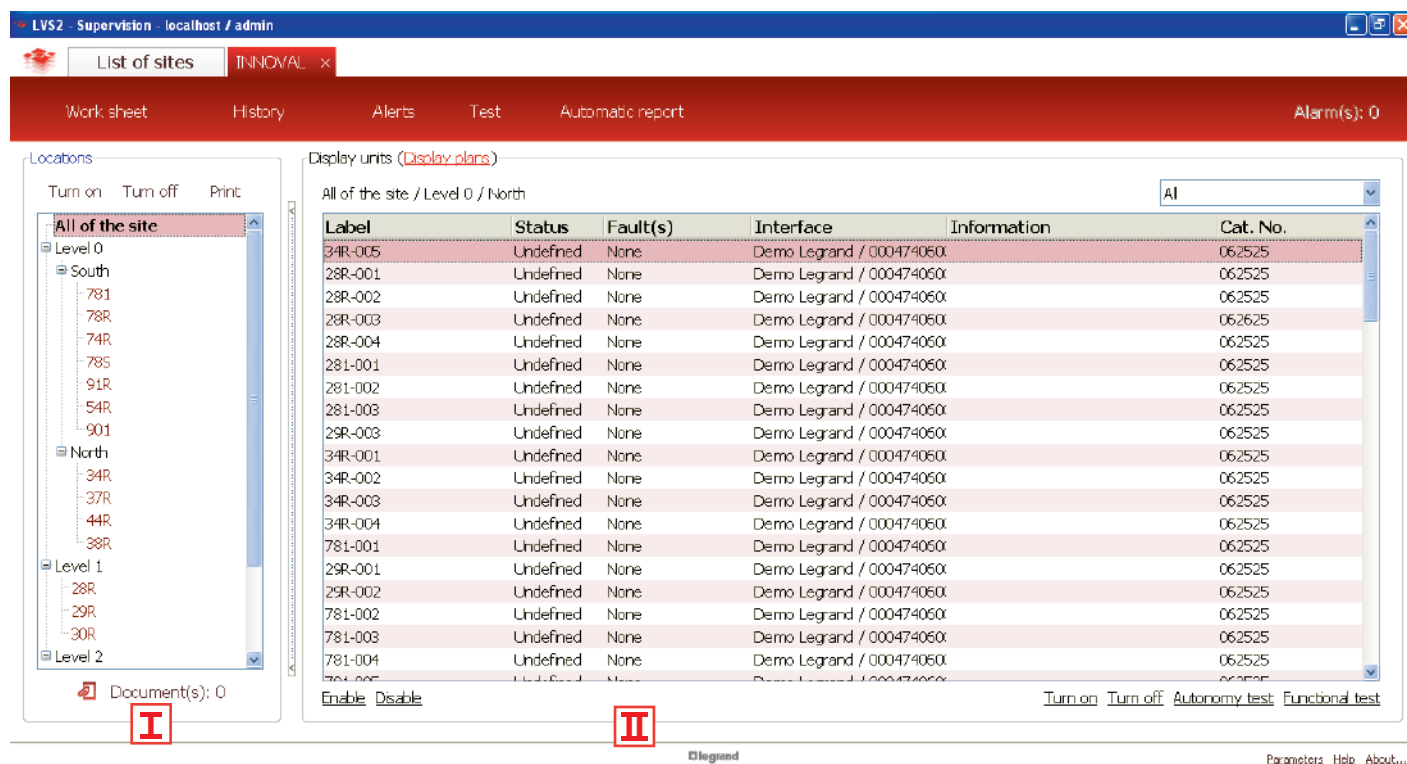


2 Click on **OK**.

By default, the software opens with an overview of each site saved. When a site is opened, a plan view of the site is displayed by default. Units with faults are displayed with a flashing orange box.



You can switch between plan view and list view by clicking on display list or display plans.



I In the **Location** section:

• To attach a document to a level:

- 1** Select the level (in the Location section).
- 2** Click on **Documents**.
- 3** Click on **Add** and select the document to attach.



You can then consult, delete or modify the document by repeating steps 1 and 2.

3 - Managing alarms

• To attach a document to a location:

- 1 Select the level (in the Location section).
- 2 Click on **Documents**.
- 3 Click on **Add** and select the document to attach.

• To switch on/off all units in a location:

- 1 Click on **Turn on** or **Turn off**

• To print out an installation status report for a location:

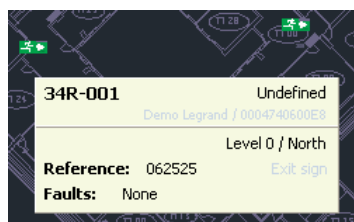
- 1 Click on **Print**

I In the Unit view section:

All actions can be applied to a selected unit: Activate / Deactivate / Switch on / Switch off / Autonomy test / Functional test.

Supervision on plan:

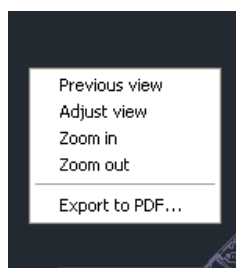
When you place the mouse cursor above a unit, information on the unit is displayed.



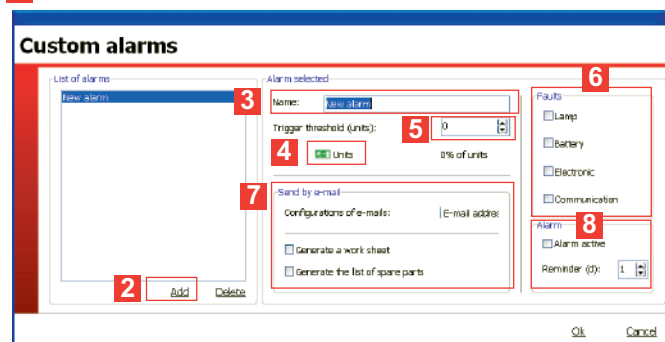
When you right click on a unit, a pop-up menu is displayed.



When you right click outside a unit, a menu with actions relating to the plan is displayed.



1 Click on **Alarms**



2 Click on **Add** to create an alarm.

3 Enter the name of the alarm.

4 Select the units concerned by this address.

5 Define the number of faulty units that will trigger an alarm.

6 Define the elements to be considered as "Faults".

7 Define recipient emails for the alarms, as well as the documents to be attached (worksheet and/or list of spare parts).

8 Activate your alarm.

Installation supervision (cont.)

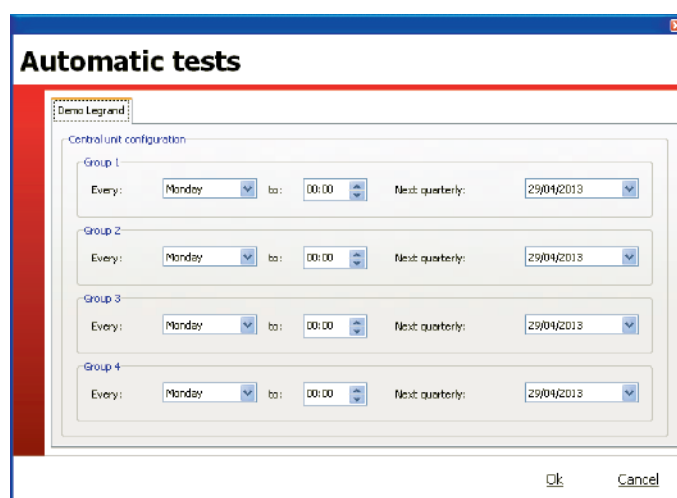
4 - Managing automatic tests

Enables the test time and date to be set for each emergency lighting unit group and each interface.

1 Click on **Tests**.

An information window appears.

2 Click on **OK**.

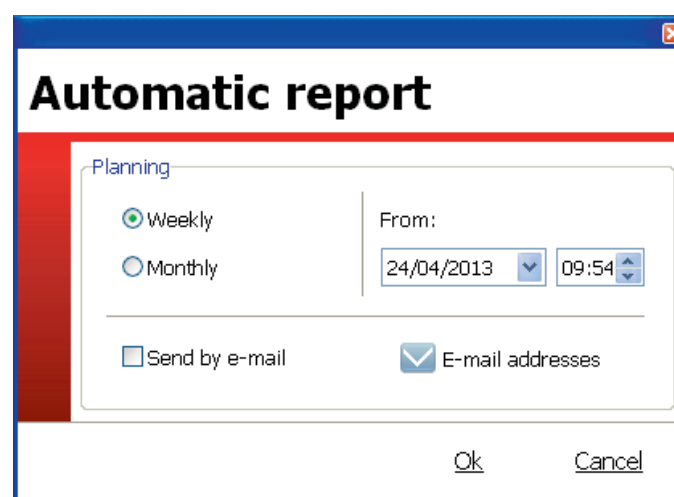


Units are randomly divided into 4 groups so as to avoid 2 adjacent units being tested at the same time.

5 - Managing automatic reports

Enables the installation report distribution mode to be managed.

1 Click on **Automatic report**.



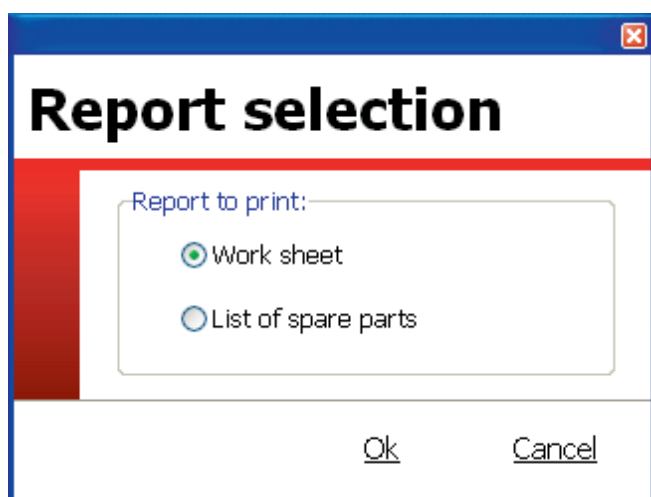
2 Select the period of the report to be produced and its start date.

The report can be sent by email. To do this, select the relevant option and enter the email addresses of recipients.

The report can be viewed directly in the software.

6 - Generating worksheets

Click on **Work sheet**:

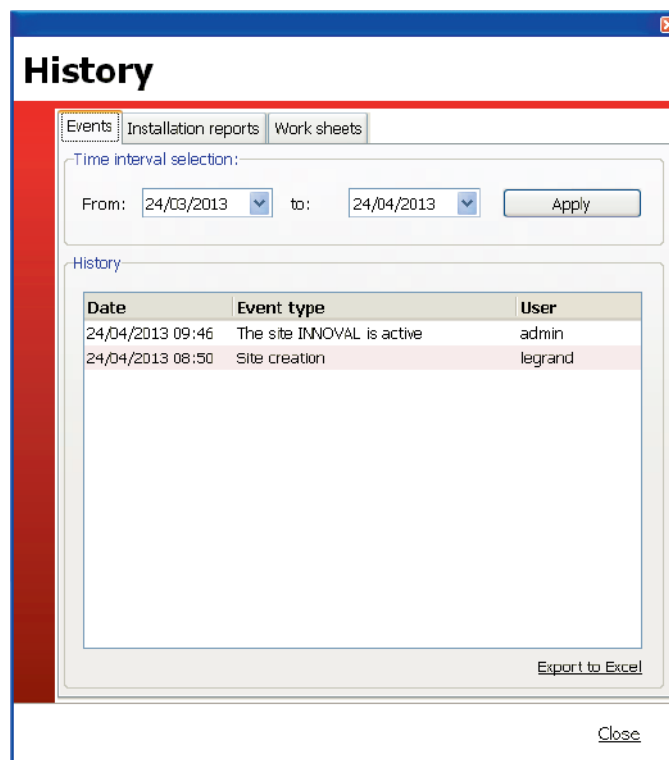


Selecting a worksheet produces a report containing all faulty units on the site.

Selecting a spare parts list produces a list of all spare parts required to repair all faulty units on the site.

7 - History

The History button enables all worksheets and installation reports issued by the supervision software to be found. It also enables tracking of all actions performed on the software and the persons involved.



LE05042AB-EN



Siège social :

128, av. du Maréchal-de-Lattre-de-Tassigny
87045 Limoges Cedex - France

tél : 05 55 06 87 87
fax : 05 55 06 88 88

www.legrand.com