

12V PSU for Hub/Hub Plus/ReX user manual

Updated July 16, 2024



12V PSU for Hub/Hub Plus/ReX is a power supply unit, connecting the Hub/Hub Plus control panels as well as the ReX radio signal extender to 12 volt DC sources. This is an electronic board, replacing the standard 110/230 V power supply unit in the body of the device.

[Buy other accessories for hubs](#)

Installing



12V PSU for Hub/Hub Plus/ReX should be installed by a qualified electrician only.

Before installing the power supply, make sure that the device is disconnected from the mains.

When installing the 12V PSU for Hub/Hub Plus/ReX, follow the general electrical safety rules, as well as the requirements of electrical safety regulatory acts. Never disassemble the device while it is under voltage!

Installation process:

1. Remove the screws and take off the hub or range extender from the SmartBracket mounting panel, shifting the device up.



2. Switch off the hub or range extender holding the power button for 2 seconds.
3. Disconnect power and Ethernet cables.





Wait 5 minutes for the capacitors to discharge.

4. Remove four screws of the back lid and take it off.



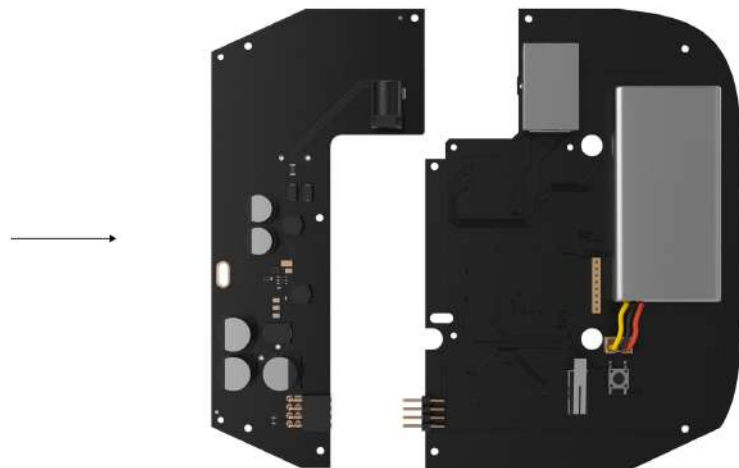
5. Remove the screws attaching the boards to the device body.



6. Carefully remove both boards, keeping them in the same plane and not disconnecting them. There is a connector between boards: do not break it.



7. Disconnect the power supply unit (smaller board) from the mainboard.
8. Connect 12V PSU Hub/Hub Plus/ReX to the mainboard using the eight-pin connector between them. Do not warp or bend the antennas while replacing the board: this can cause the device to malfunction.



9. Reassemble the boards and the device body than tighten the screws.



Check that the battery and its cables are not clamped. When installed properly, the boards stand firmly on all guides and do not stagger. Holding the boards together with the back lid, turn the device over. The SIM card slot, power, and Ethernet sockets should

the back lid, turn the device over. The SIM card slot, power, and Ethernet sockets should match accurately and fit the corresponding sockets, and the power button should not be stuck.

Change the information about input voltage on the device body to avoid incorrect power connections in the future. Use the special bundled sticker with the instruction included in the set.

10. Connect the power (and Ethernet cable) to the appropriate sockets.

11. Switch on the power source to the hub or range extender.



Do not connect the power cable with a voltage that exceeds the acceptable input voltage 12V PSU for Hub/Hub Plus/ReX.

12. Switch on the device by holding the power button for 2 seconds.

13. Close and fix the SmartBracket mounting panel.

Switch on the device, wait until loading, and check the external power status in the Ajax app. If there is no power, and you are using a terminal adapter, check the polarity of the connected wires. If there is no power even after reconnecting, please [contact the Ajax Support Service](#).

Maintenance

The device does not require technical maintenance.

Technical specifications

[All technical specifications of 12V PSU for Hub/Hub Plus/ReX](#)

[Compliance with standards](#)

Complete Set

1. 12V PSU for Hub/Hub Plus/ReX.
2. Terminal adapter.
3. Quick start guide.

Warranty

Warranty for the AJAX SYSTEMS MANUFACTURING Limited Liability Company products is valid for 2 years after the purchase.

If the device does not function correctly, please contact the Support Service first. In half of the cases, technical issues can be solved remotely!

[Warranty Obligations](#)

[User Agreement](#)

Technical support: support@ajax.systems

Subscribe to the newsletter about safe life. No spam

Email

Subscribe