

## EBDRC | Adjustable head, flush mounted detectors



Head can be adjusted to suit the detection pattern required

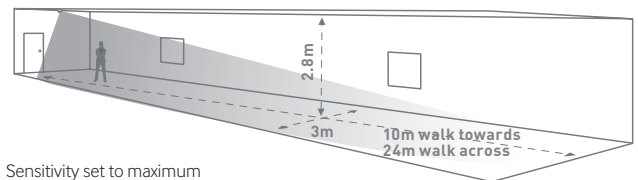


The EBDRC PIR series contains an adjustable head, and is fitted with a curtain lens for long range detection. Our directional PIR is suitable for mounting in aisleway and corridor applications where a long narrow detection pattern is required.

- Adjustable head
- Curtain lens for longer detection range
- Lux and time control
- IP40 rated
- Ideal for corridor applications.

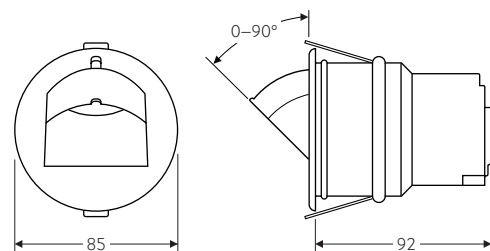
### Detection patterns

high < sensitivity > low









Sensitivity set to maximum  
Detector head position set to 90°

### Dimensions (mm)



## Technical Data

Part Code	EBDRC-PRM	EBDRC-DD	EBDRC-AD
<b>Technical Data</b>			
Control method	PRM Switching	DALI/DSI Digital Dimming	1–10V Analogue Dimming
IP rating	IP40	IP40	IP40
Device/ballast control	–	Up to 30 drivers/ballasts	Up to 10 drivers/ballasts
Weight	0.10kg	0.11kg	0.11kg
Supply voltage AC	230VAC+/-10%	120 or 230VAC+/-10%	120 or 230VAC+/-10%
Supply Frequency (Hz)	50Hz	50/60Hz	50/60Hz
Power consumption parasitic mW	840mW	810mW	724mW
Terminal capacity	2.5mm <sup>2</sup>	2.5mm <sup>2</sup>	2.5mm <sup>2</sup>
Working temperature range °C	-10 to 35	-10 to 35	-10 to 35
Humidity	5 to 95% non-condensing	5 to 95% non-condensing	5 to 95% non-condensing
Material (casing)	Flame retardant ABS and PC/ABS	Flame retardant ABS and PC/ABS	Flame retardant ABS and PC/ABS
Insulation class	Class 2	Class 2	Class 2
Compliance	EMC-2014/30/EU LVD-2014/35/EU	EMC-2014/30/EU LVD-2014/35/EU	EMC-2014/30/EU LVD-2014/35/EU
Time out range	10s–99m	10s–99m	10s–99m
<b>Maximum loads</b>			
Incandescent lighting (INC)	10A	10A	10A
Fluorescent lighting (F)	10A	10A	10A
Compact fluorescent lighting (CF)	10A	10A	10A
LED lighting (LED)	10A	10A	10A
Resistive heaters (RH)	10A	10A	10A

 <p>www.cpelectronics.co.uk</p>	<p>CP Electronics A Business unit of Legrand Electric Limited. Brent Crescent, London NW10 7XR, UK t. +44 (0)333 900 0671 info@cpelectronics.co.uk</p> <p>connect with us    </p>	<p><b>Important notice:</b> This device should be installed by a qualified electrician in accordance with the latest edition of the IEE Wiring Regulations and the applicable Building Regulations.</p> <p>Due to our policy of continual product improvement CP Electronics reserves the right to alter the specification of this product without prior notice.</p> <div style="text-align: right;">   </div>
--	---	--