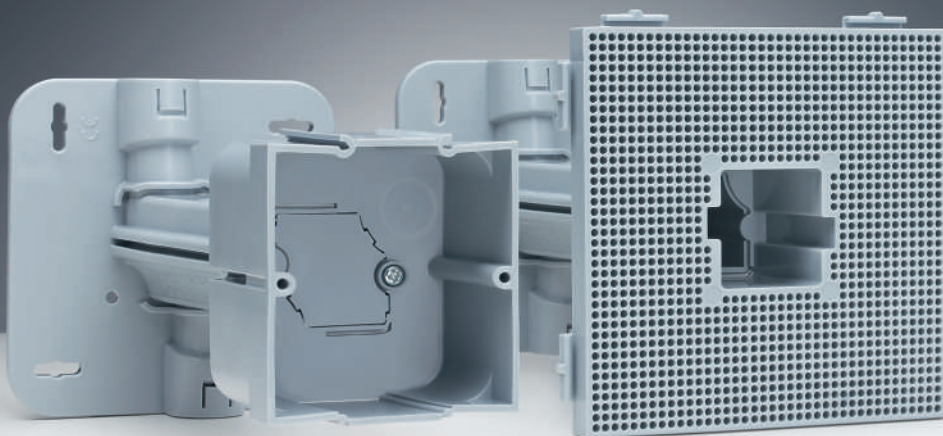
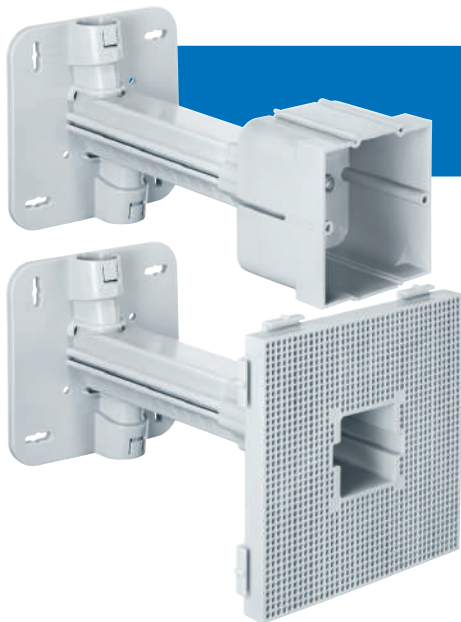
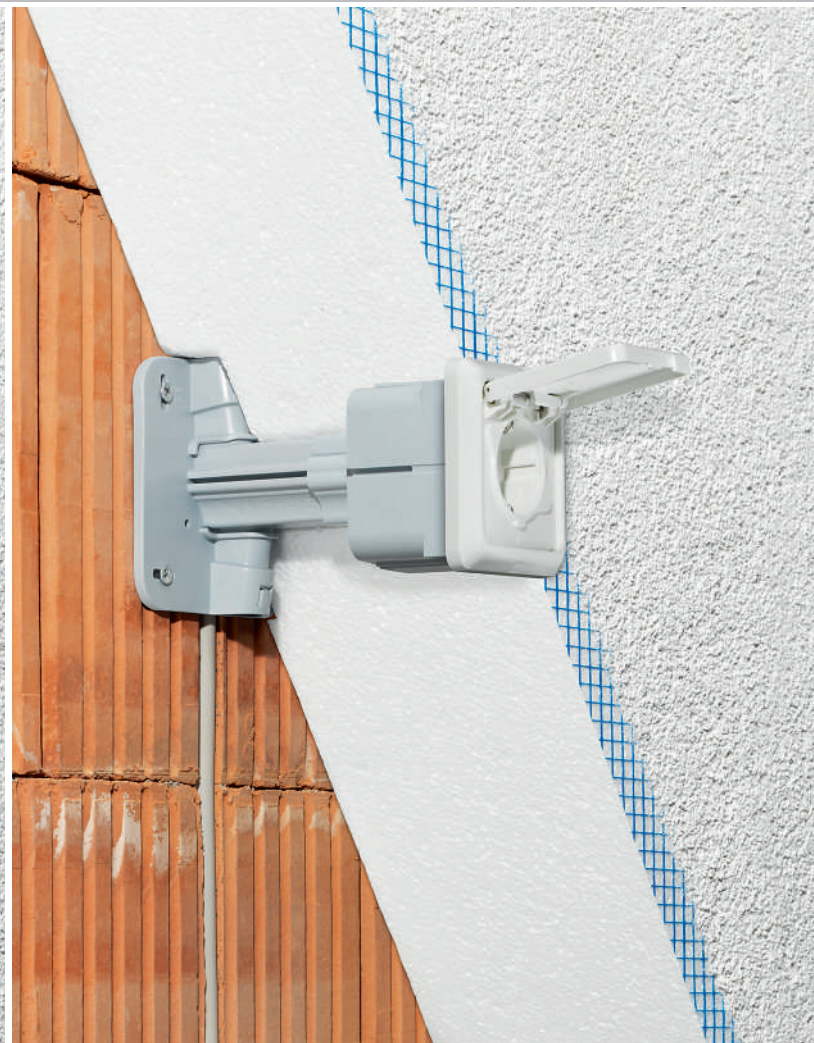


# Telescope equipment carrier and switch box.

For secure attachment of accessories to insulated facades.

Secure attachment to walls and ceilings.





## Telescope equipment carrier and switch box

Telescope equipment carrier and switch box for the secure installation of luminaires, sockets and many other accessories on insulated external facades.

The new equipment carriers and switch boxes are optimised for use with modern insulation thicknesses and allow flexible use in external facades with insulation thicknesses from 80 to 200 mm.

With its bearing load up to 5 kg and its expandable mounting area, the equipment carrier provides a wide range of installation opportunities.

The one-gang boxes offer increased installation flexibility and can easily be combined for multiple combinations.

The basic carrier has two conduit entries which guarantee secure connection of conduits. The integrated cable routing in the carrier arm ensures fast, easy introduction of the cable.

- For insulation thicknesses from 80 to 200 mm
- Equipment carriers for accessories up to max. 5 kg
- One-gang boxes can be combined with a standardised 71 mm combination distance
- Conduit entries on the carrier with internal cable routing
- Integrated indicated dimension allows easy cutting off to insulation thickness
- Front fixing and depth stop prevent incorrect installation
- Front fixing of the mounting plate/one-gang box



## Installing the basic carrier



Prepare the cable routes. Try to avoid direct cable routing through masonry and insulation.



The internal cable routing can easily be broken off to permit cable routing from the rear.

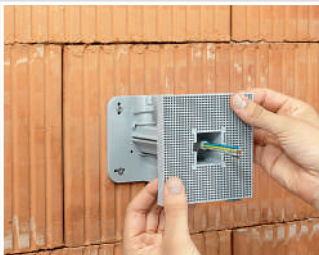


Saw the carrier to the required length. The integrated indicated dimension ensures exact reading of the dimension.



Slotted holes allow precise alignment even when the drill holes are not exact.

## Installing the equipment carrier



Push the one-gang box onto the supporting arm as far as the stop.



The new front fixing and the depth stop always ensure exact fitting and prevent incorrect installation.



Lateral fixings allow the secure positioning of several equipment carriers next to each other ...



... and stable installation for accessories when the attachment points are far apart.

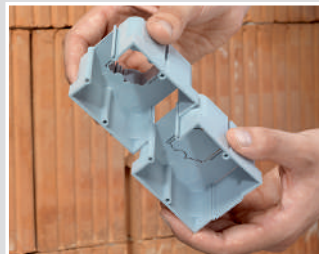
## Installing the one-gang box



Push the one-gang box onto the supporting arm as far as the stop.



The new front fixing and the depth stop always ensure exact fitting and prevent incorrect installation.



For multiple combinations, cut out the side separator walls and connect the one-gang boxes.



For multiple combinations, cut out the side separator walls and connect the one-gang boxes.

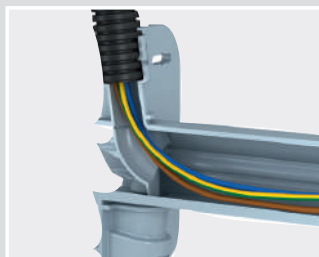
## Product advantages



Dimensions shown on the carrier ensure that the carrier length can easily be sawn off to match the insulation thickness – no need for measuring!



Slotted holes allow exact alignment of the carrier, even when the drill holes are not exact.



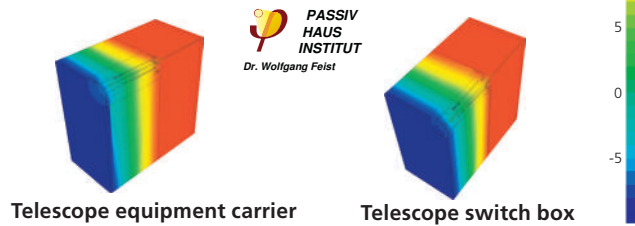
The two conduit entries on the carrier guarantee secure conduit support. The integrated cable routing ensures fast, easy cable insertion.



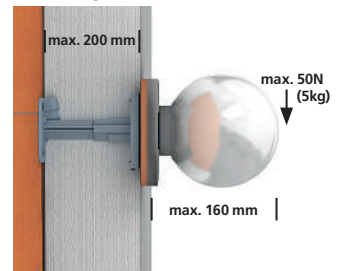
Screw luminaires and many other accessories in the mounting panel through the plaster using screws up to 4 mm Ø.

## Heat bridge calculation

A heat bridge calculation carried out by the Passivhaus Institut Dr. Feist in Darmstadt showed that the thermal conductivity is only minimally affected, and this demonstrated that no heat bridges occur. When the space between the basic carrier and the mounting plate/one-gang box is filled with insulating material, the loss coefficient of "x WB" for the telescope equipment carrier is 0.0085 W/K, and 0.0077 W/K for the telescope switch box.



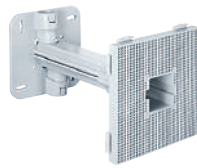
## Bearing load



If the equipment carrier is mounted on a wall, always ensure that the conduit entries are positioned vertically.

## Telescope equipment carrier

- for secure installation of luminaires and much more
- for use with external insulation of walls and ceilings
- installation area for dowel-free installation of accessories



<b>Insulation thickness</b>	80 - 200 mm
Length x width	120 x 120 mm
max. mounting area for accessories	120 x 120 mm
Conduit entry M20 on carrier	2
Weight load (ceiling)	5 kg
Weight load (wall)	5 kg
<b>Art. No.</b>	<b>1159-60</b>
Packaging inner/dispatch	- / 10

## Telescope switch box

- for secure fixing of sockets and much more
- for use with external insulation of walls and ceilings
- with 2 screw domes
- standardised combination distance 71 mm



<b>Insulation thickness</b>	80 - 200 mm
Depth	50 mm
Length x width	68 x 70 mm
Conduit entry M20 on carrier	2
Conduit entries up to 16 mm ø	2
<b>Art. No.</b>	<b>1159-61</b>
Packaging inner/dispatch	- / 10

## Combination one-gang box

- for combinations with telescope switch box (Art. No. 1159-61)



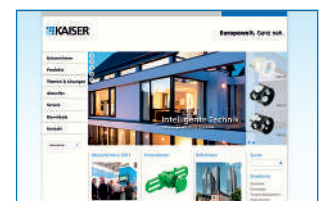
<b>Insulation thickness</b>	80 - 200 mm	-
Depth	50 mm	50 mm
Length x width	68 x 70 mm	68 x 70 mm
Conduit entry M20 on carrier	2	-
Conduit entries up to 16 mm ø	2	2
<b>Art. No.</b>	<b>1159-61</b>	<b>1159-62</b>
Packaging inner/dispatch	- / 10	- / 10

## Technical information and support

All additional information on our products, system solutions and communication media as well as animations showing our new products are now available on our website: [www.kaiser-elektro.de](http://www.kaiser-elektro.de)

Please do not hesitate to contact our team of technical consultants if you have any questions or require more information.

KAISER Telephone: ++49(0)2355.809.61 | KAISER eMail: [technik@kaiser-elektro.de](mailto:technik@kaiser-elektro.de)



## KAISER GmbH & Co. KG

Ramsloh 4 · D-58579 Schalksmühle  
 Tel. +49(0)2355.809.0 · Fax +49(0)2355.809.21  
[www.kaiser-elektro.de](http://www.kaiser-elektro.de) · [info@kaiser-elektro.de](mailto:info@kaiser-elektro.de)

