



<b>EAN:</b>	4013288231024	<b>Size:</b>	570x460x50 mm
<b>Part number:</b>	05136610001	<b>Weight:</b>	2280 g
<b>Article number:</b>	Adventskalender 2025	<b>Country of origin:</b>	CZ
		<b>Customs tariff number:</b>	82054000

- The Wera Advent calendar is the iconic gift for all tool fans with Christmas in their hearts
- Unique mix of screwdriving tools for 18 different screw profiles
- Includes 2 storage racks which can be placed upright or hung on the wall
- For precision engineering, VDE, or workshop applications
- Includes screw grippers which hold the screw securely on the tool
- Bottle opener in a new colour combination

The 2025 Wera Advent calendar includes a comprehensive screwdriving workshop for the most common screw profiles and screwdriving operations. The two included racks can be placed upright or hung on the wall. The giftee can look forward to 28 surprises: 15 screwdrivers, two of them slotted for VDE, 2 Stubbys, 3 Micro tools for precision engineering and a chiseldriver with impact cap and pound-thru blade. One bitholding screwdriver with T-handle for 1/4" bits and 3 long bits (89 mm) complete the content perfectly. The T-handle fits well in the hand, which allows the transmission of high torques. The two screw grippers hold screws securely on the tool. The bottle opener is a must for all Advent calendar fans - in 2025 once again in a special design only included in the calendar. Two racks ensure neat storage of all the tools (and the bottle opener).



**Web link**  
<https://www.wera.de/en/05136610001>

Wera - Adventskalender 2025  
 05136610001 - 4013288231024

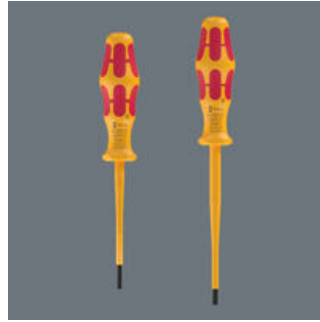
Wera Werkzeuge GmbH  
 Korzter Straße 21-25  
 D-42349 Wuppertal  
 Tel: +49 (0)2 02 / 40 45-0  
 E-Mail: info@wera.de

**Series 900 – the Chiseldriver**



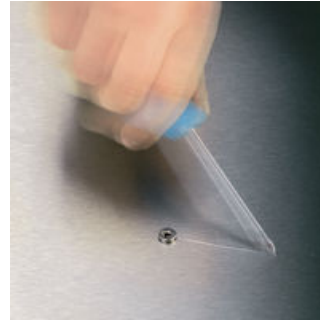
The chiseldriver is the solution for jobs that require more than just screwdriving. For fastening, chiselling and loosening seized screws or hose clamps. With an integrated impact cap that extends service life and reduces the risk of splintering. With a pound-thru hexagon blade made from high-grade material for - zero-loss transfer of high forces when struck with a hammer. The tough viscous tempered material prevents the blade from splintering or breaking. More TORQUE can be transferred by attaching an open-jawed or ring spanner to the integrated hexagon bolster.

**The 1060 i VDE screwdrivers**



Testing the tool for dielectric strength at 10,000 volt gives the user the peace of mind that their tool has been tested for its most important property, insulation. Wera VDE tools are subjected to this test piece by piece which guarantees safe working at up to 1,000 volt.

**Lasertip prevents slipping out**



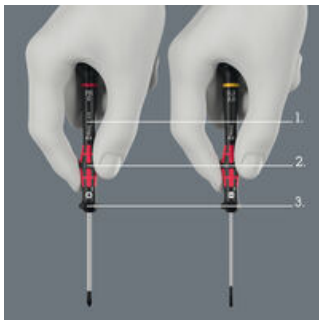
It happens time and time again that the tip slips out of the screw head when screwdriving, sometimes damaging valuable surfaces or even causing injury. The tips of the Wera Lasertip screwdrivers are microscopically roughened by means of a laser. This rough surface literally "bites" itself firmly into the screw head. Slipping out becomes a thing of the past.

**Compact shape**



With its compact handle shape and the short blade, the Kraftform Stubbies are particularly suitable for working in confined screwdriving situations.

**Kraftform Micro screwdriver**



The Kraftform Micro screwdrivers with their power zone (1), fast rotating zone (2) and precision zone (3) perfectly meet the requirements for precision mechanical couplings. The smooth-running cap, on which you can rest your hand, ideally supports these advantages.

**The 9548 T-handle**



The ergonomic shape of the T-handle fills the palm of the hand well, the fingers lie in the soft rounded handle recesses. The whole hand makes contact with the handle which avoids friction losses between the hand and the handle. The bit mounting is suitable for 1/4" hex drive bits.

**And this is how the gripper works**



The attachment tool with gripping function for screws. Holds all screw profiles securely on the tool. The screw gripper can be pushed upwards on the blade while screwdriving, so that it does not get in the way, even in deeper screwdriving situations. The screw gripper can also be used with L-keys and long bits!

**Two storage racks**



The two storage racks (can easily be assembled from the top parts 9545 and 9547 and the side parts 9546) ensure neat storage and do not take up much space - neither on the work table nor on the wall.

**Web link**

<https://www.wera.de/en/05136610001>

Wera - Adventskalender 2025  
05136610001 - 4013288231024

Wera Werkzeuge GmbH  
Korzter Straße 21-25  
D-42349 Wuppertal  
Tel: +49 (0)2 02 / 40 45-0  
E-Mail: info@wera.de

Set contents:

932 A Slotted screwdriver, 1.2 x 7 x 125 mm



1x 1.2 x 7 x 125 mm



350 PH Phillips-head screwdriver, PH 1 x 80 mm



1x PH 1 x 80 mm

1x PH 2 x 100 mm



350 PH Phillips-head Stubby/carburettor screwdriver, PH 2 x 25 mm



1x PH 2 x 25 mm



355 PZ Pozidriv screwdriver, PZ 1 x 80 mm



1x PZ 1 x 80 mm

1x PZ 2 x 100 mm



367 TORX® Screwdriver, TX 15 x 80 mm



1x TX 15 x 80 mm

1x TX 20 x 100 mm

1x TX 25 x 100 mm



335 Stubby/carburettor screwdriver, 1 x 5.5 x 24.5 mm



1x 1 x 5.5 x 24.5 mm



2050 PH Electronics Phillips-head screwdriver, PH 0 x 60 mm



1x PH 0 x 60 mm



<sup>1)</sup> Size 0 modified according to JCIS 0 (Japanese Camera Industrial Standard)

2035 Electronics slotted screwdriver, 0.30 x 2 x 60 mm



1x 0.30 x 2 x 60 mm

1x 0.40 x 2.5 x 80 mm



9548 T-handle bitholding screwdriver for 1/4" bits, 1/4" x 93.6 mm



1x 1/4" x 93.6 mm



Web link

<https://www.wera.de/en/05136610001>

Wera - Adventskalender 2025  
05136610001 - 4013288231024

Wera Werkzeuge GmbH  
Korzter Straße 21-25  
D-42349 Wuppertal  
Tel: +49 (0)2 02 / 40 45-0  
E-Mail: [info@wera.de](mailto:info@wera.de)

Wera Advent calendar 2025

840/4 Z bits, 4 x 89 mm



05059631001	1x	4 x 89 mm
05059632001	1x	5 x 89 mm
05059633001 <sup>1)</sup>	1x	6 x 89 mm

1) Pound-thru hexagonal

1060 i VDE-insulated Kraftform slotted screwdriver, 0.4 x 2.5 x 80 mm



1x	0.4 x 2.5 x 80 mm
1x	0.6 x 3.5 x 100 mm

1440 Screw Gripper, 4.5-6 x 41 mm



1x	4.5-6 x 41 mm
----	---------------

1442 Screw Gripper, 6.0-8.5 x 41 mm



1x	6.0-8.5 x 41 mm
----	-----------------

9547 Top part A for screwdriver rack, 212 x 67 x 30 mm



1x	212 x 67 x 30 mm
----	------------------

9545 Top part B for screwdriver rack, 212 x 67 x 30 mm



1x	212 x 67 x 30 mm
----	------------------

Web link

<https://www.wera.de/en/05136610001>

Wera - Adventskalender 2025  
05136610001 - 4013288231024

Wera Werkzeuge GmbH  
Korzter Straße 21-25  
D-42349 Wuppertal  
Tel: +49 (0)2 02 / 40 45-0  
E-Mail: [info@wera.de](mailto:info@wera.de)

9546 Side part for screwdriver rack, 18 x 67 x 126 mm

4x 18 x 67 x 126 mm



1496 Bottle opener, 118

1x 118



**Web link**

<https://www.wera.de/en/05136610001>

Wera - Adventskalender 2025  
05136610001 - 4013288231024

Wera Werkzeuge GmbH  
Korzter Straße 21-25  
D-42349 Wuppertal  
Tel: +49 (0)2 02 / 40 45-0  
E-Mail: [info@wera.de](mailto:info@wera.de)